

# Cisco 200-301 Exam Preparation Materials

**Vendor:** Cisco

**Exam Code:** 200-301

**Exam Name:** Implementing and Administering Cisco Solutions (200-301 CCNA) v1.1

**Certification:** CCNA

**Total Questions:** 1716 Q&A

**Updated on:** Jul 03, 2026

<https://www.leads4pass.com/200-301.html>

## Question 1:

How does frame switching function on a switch?

- A. floods unknown destinations to all ports except the receiving port
- B. modifies frames that contain a known source VLAN
- C. rewrites the source and destination MAC address
- D. buffers and forwards frames with less than 5 CRCs

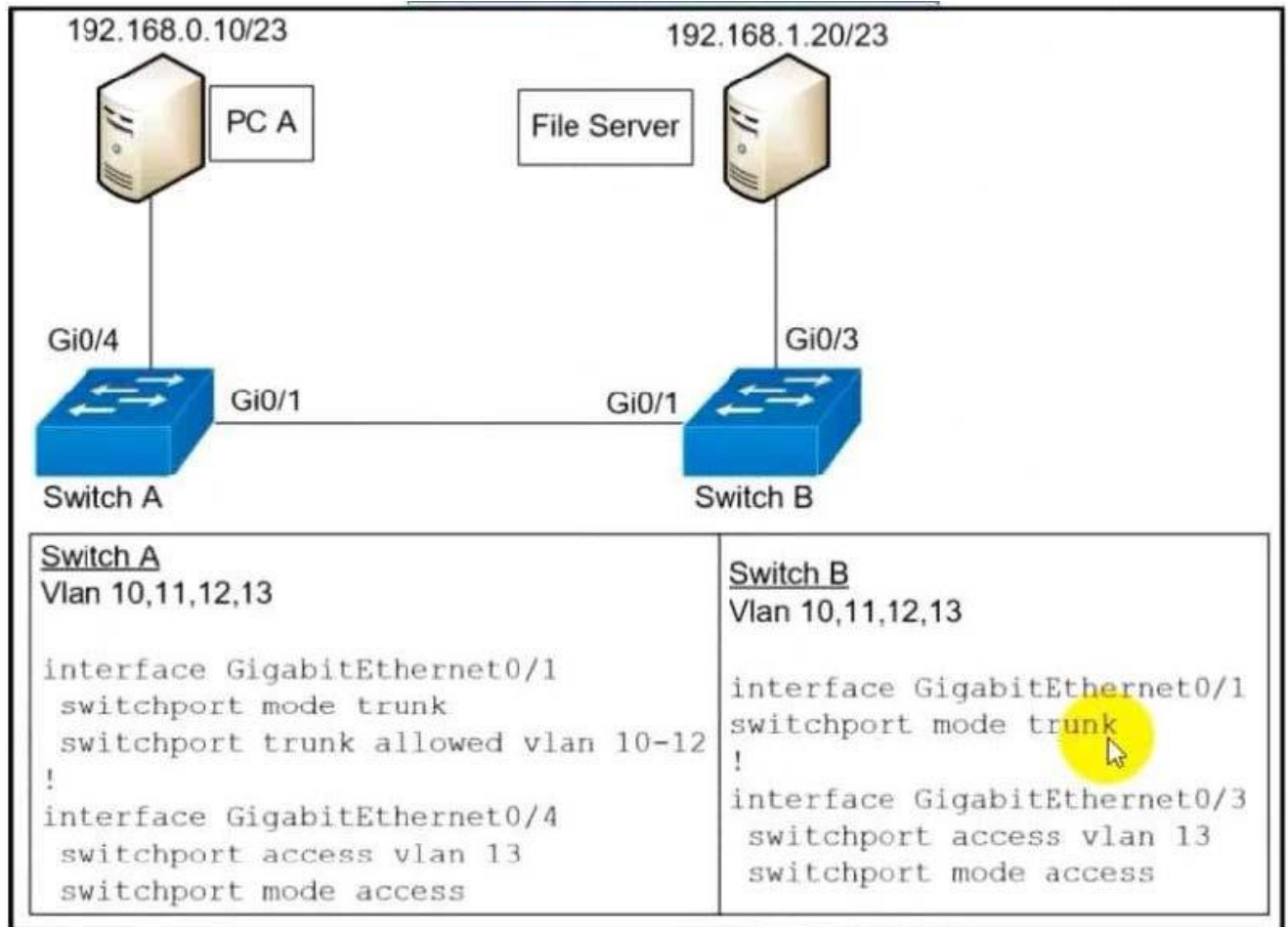
Correct Answer: A

---

---

## Question 2:

Refer to the exhibit.



A network engineer must configured communication between PC A and the File Server. To prevent interruption for any other communications, which command must be configured?

- A. Switch trunk allowed vlan 12
- B. Switchport trunk allowed vlan none
- C. Switchport trunk allowed vlan add 13
- D. Switchport trunk allowed vlan remove 10-11

Correct Answer: C

**Question 3:**

What facilitates a Telnet connection between devices by entering the device name?

- A. SNMP
- B. DNS lookup
- C. syslog

D. NTP

Correct Answer: B

---

**Question 4:**

Refer to the exhibit.

```
Cat9300-1# show interface gi1/0/1 switchport
Name: Gi1/0/1
Switchport: Enabled
Administrative Mode: trunk
Operational Mode: trunk
Administrative Trunking Encapsulation: dot1q
Operational Trunking Encapsulation: dot1q
Negotiation of Trunking: On
Access Mode VLAN: 1 (default)
Trunking Native Mode VLAN: 321 (VLAN0321)
Administrative Native VLAN tagging: enabled
Trunking VLANs Enabled: 100,200,300
Pruning VLANs Enabled: 2-1001
```

A network administrator configures an interface on a new switch so that it connects to interface Gi1/0/1 on switch Cat9300-1. Which configuration must be applied to the new interface?

- A. switchport mode trunk switchport trunk native vlan 321 switchport trunk allowed vlan 100,200,300
- B. switchport mode dynamic desirable switchport trunk native vlan 321 switchport trunk allowed vian 100,200,300
- C. switchport trunk encapsulation dot1q switchport trunk native vlan 321 switchport trunk allowed vlan 100-300
- D. switchport nonegotiate switchport access vlan 321 switchport trunk allowed vlan except 2-1001

Correct Answer: A

---

---

**Question 5:**

**DRAG DROP**

Drag each route source from the left to the numbers on the right. Beginning with the lowest and ending with the highest administrative distance.

Select and Place:

<b>connected</b>	<b>1</b>
<b>EBGP</b>	<b>2</b>
<b>EIGRP</b>	<b>3</b>
<b>OSPF</b>	<b>4</b>
<b>RIP</b>	<b>5</b>
<b>static</b>	<b>6</b>

Correct Answer:

	<b>connected</b>
	<b>static</b>
	<b>EBGP</b>
	<b>EIGRP</b>
	<b>OSPF</b>
	<b>RIP</b>

Connected = 0 Static Route = 1 eBGP (external) = 20 EIGRP (Internal) = 90 OSPF = 110  
IS-IS = 115 RIP = 120 EIGRP (external) = 170 iBGP (internal BGP) = 200 EIGRP summary  
route = 5

---

---

**Question 6:**

Which step in the link-state routing process is described by a router sending Hello packets out all of the OSPF- enabled interfaces?

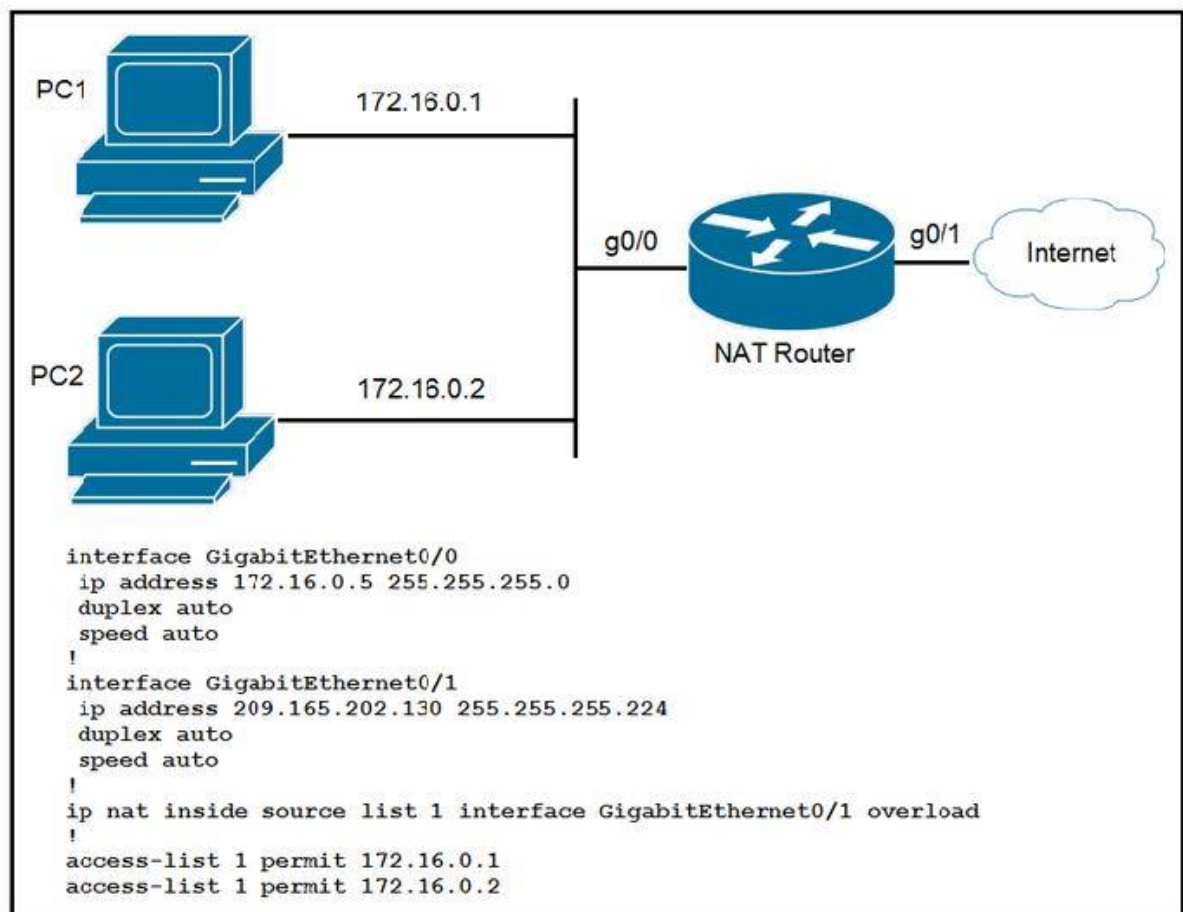
- A. electing the designated router
- B. establishing neighbor adjacencies
- C. injecting the default route
- D. exchanging link-state advertisements

Correct Answer: B

---

**Question 7:**

Refer to the exhibit. How should the configuration be updated to allow PC1 and PC2 access to the Internet?



- A. Modify the configured number of the second access list.
- B. Add either the ip nat {inside|outside} command under both interfaces.
- C. Remove the overload keyword from the ip nat inside source command.

D. Change the ip nat inside source command to use interface GigabitEthernet0/0.

Correct Answer: B

ip nat inside source list INSIDE-NET pool SHARED-IP (g0/1) overload (in this case G0/1). Only inside/outside on the interfaces is missing.

---

---

**Question 8:**

Which WAN access technology is preferred for a small office/home office architecture?

- A. broadband cable access
- B. frame-relay packet switching
- C. dedicated point-to-point leased line
- D. Integrated Services Digital Network switching.

Correct Answer: A

Service providers provide Internet access using broadband services such as DSL, cable, and satellite access. Broadband connections are typically used to connect small offices and telecommuting employees to a corporate site over the Internet. Data traveling between corporate sites over the public WAN infrastructure should be protected using VPNs.

---

---

**Question 9:**

Which configuration command can you apply to a HSRP router so that its local interface becomes active if all other routers in the group fail?

- A. no additional config is required
- B. standby 1 track ethernet
- C. standby 1 preempt
- D. standby 1 priority 250

Correct Answer: A

Simply because that will be the default behavior routers would follow in the event all other routers in the HSRP group fail, then it would not keep attributes such as priority or preemption. What preemption does in summary is to make sure that the configured Priority on all routers within the same HSRP group is always respected. That is, if R1 is configured on the HSRP group with a priority of 150 but he stands as active since all other routers currently subscribed to that group have a priority 150, then will router will preempt the

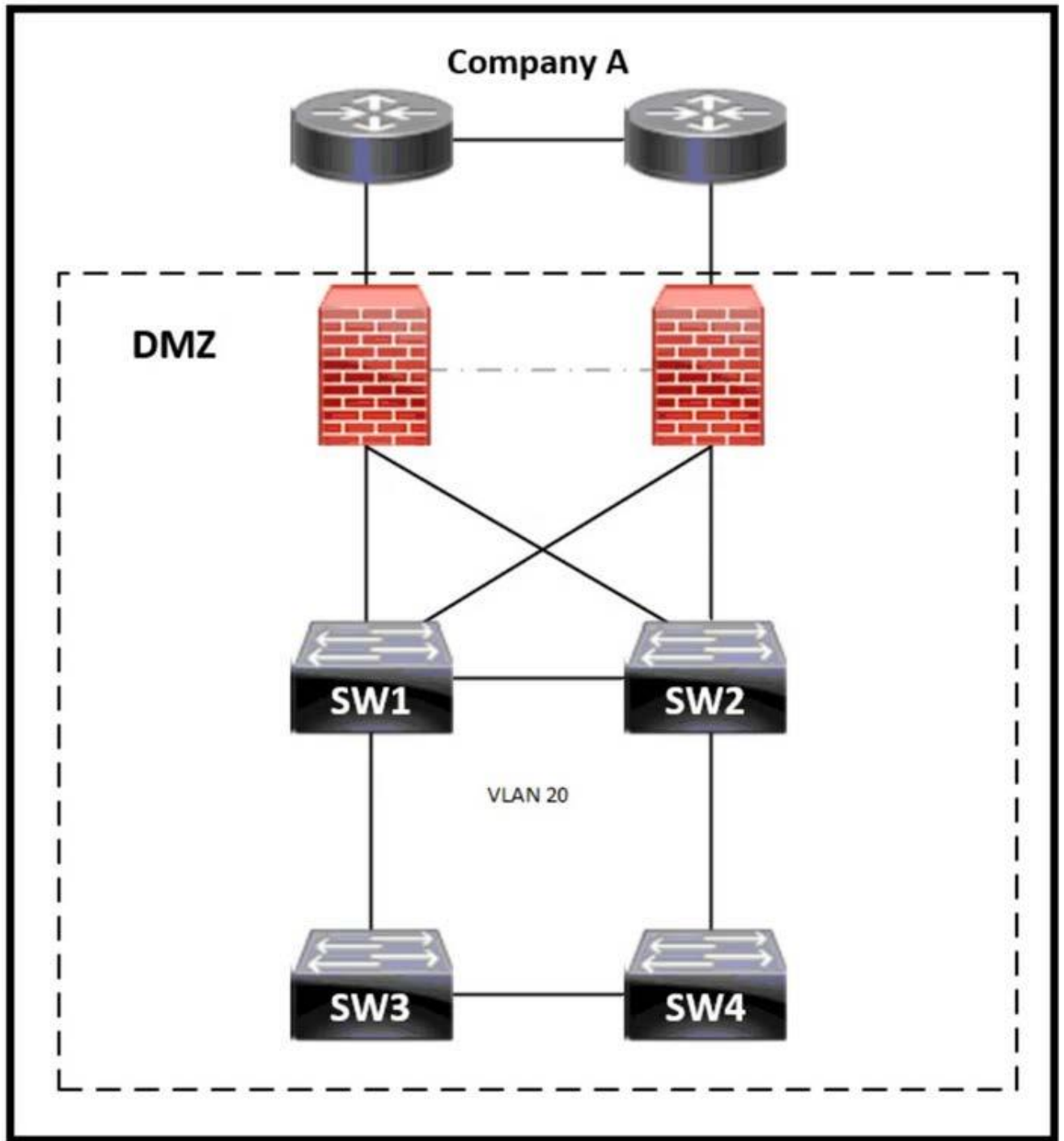
current active router and will take over hence becoming the new active router. With preemption disabled, the new router does not preempt the current active router, unless routers in the group have to renegotiate their roles based on each router's priority at the time of negotiation.

---

---

**Question 10:**

Refer to the exhibit.



SW1 = 24596 0018.184e.3c00  
SW2 = 28692 004a.13e9.6900  
SW3 = 32788 0022.55cf.dd00  
SW4 = 64000 0041.396d.690f

Which switch becomes the root of a spanning tree for VLAN 20 if all links are of equal speed?

- A. SW1
- B. SW2
- C. SW3
- D. SW4

Correct Answer: A

The root bridge is the bridge with the lowest Bridge ID

---

---

**Question 11:**

What is the functionality of the Cisco DNA Center?

- A. IP address pool distribution scheduler
- B. data center network policy controller
- C. console server that permits secure access to all network devices
- D. software-defined controller for automation of devices and services

Correct Answer: D

---

---

**Question 12:**

Where does wireless authentication happen?

- A. SSID
- B. radio
- C. band
- D. Layer 2

Correct Answer: D

---

---

**Question 13:**

Refer to the exhibit. Router R1 is running three different routing protocols. Which route characteristic is used by the router to forward the packet that it receives for destination IP 172.16.32.1?

```
R1# show ip route
....
D    172.16.32.0/27    [90/2888597172] via 20.1.1.1
O    172.16.32.0/19    [110/292094] via 20.1.1.10
R    172.16.32.0/24    [120/2] via 20.1.1.3
```

- A. longest prefix
- B. administrative distance
- C. cost
- D. metric

Correct Answer: A

<https://learningnetwork.cisco.com/s/question/0D53i00000KszSICAJ/administrative-distance-vs-longest-match-rule>

---

**Question 14:**

Which two statements about EtherChannel technology are true? (Choose two.)

- A. EtherChannel provides increased bandwidth by bundling existing FastEthernet or Gigabit Ethernet interfaces into a single EtherChannel.
- B. STP does not block EtherChannel links.
- C. You can configure multiple EtherChannel links between two switches, using up to a limit of sixteen physical ports.
- D. EtherChannel does not allow load sharing of traffic among the physical links within the EtherChannel.
- E. EtherChannel allows redundancy in case one or more links in the EtherChannel fail.

Correct Answer: AE

---

**Question 15:**

DRAG DROP

An interface has been configured with the access list that is shown below.

```
access-list 107 deny tcp 207.16.12.0.0.3.255 any eq http
access-list 107 permit ip any any
```

On the basis of that access list, drag each information packet on the left to the appropriate category on the right.

Select and Place:

The interface consists of two main columns. The left column contains five light blue boxes, each with a black border and text describing a packet. The right column contains two orange-bordered boxes. The top box is labeled 'Permitted' and contains two empty light blue rectangular slots. The bottom box is labeled 'Denied' and also contains two empty light blue rectangular slots.

Packet Information	Category
source IP:207.16.32.14, destination application: http	Permitted
source IP:207.16.15.9, destination port: 23	Permitted
source IP:207.16.14.7, destination port: 80	Permitted
source IP:207.16.13.14, destination application: http	Permitted
source IP:207.16.16.14, destination port: 53	Permitted

Correct Answer:


Permitted
source IP:207.16.32.14, destination application: http
source IP:207.16.15.9, destination port: 23
source IP:207.16.16.14, destination port: 53

Denied
source IP:207.16.14.7, destination port: 80
source IP:207.16.13.14, destination application: http

## Cisco 200-301 Exam Preparation Materials

**Vendor:** Cisco

**Exam Code:** 200-301

**Exam Name:** Implementing and Administering Cisco Solutions (200-301 CCNA) v1.1

**Certification:** CCNA

**Total Questions:** 1716 Q&A

**Updated on:** Jul 03, 2026

<https://www.leads4pass.com/200-301.html>